

**CONVINCE YOURSELF!**



See more  
**ASPHALT REPAIR** info  
on our website:

[WWW.RUST-OLEUM.EU/ASPHALT](http://WWW.RUST-OLEUM.EU/ASPHALT)



**Rust-Oleum Netherlands B.V.**  
P.O. Box 138  
4700 AC Roosendaal  
The Netherlands  
T: 31 (0) 165 593 636  
F: 31 (0) 165 593 600  
[info@rust-oleum.eu](mailto:info@rust-oleum.eu)

**Rust-Oleum UK Ltd.**  
Rotterdam House  
116 Quayside Newcastle  
NE1 3DY United Kingdom  
T: +44 (0)2476 717 329  
F: +44 (0)2476 718 930  
[info@rust-oleum.eu](mailto:info@rust-oleum.eu)

**Rust-Oleum France S.A.S.**  
11, rue Jules Verne  
B.P. 60039  
95322 St-Leu-La-Forêt Cedex  
France  
T: +33 (0) 130 40 00 44  
F: +33 (0) 130 40 99 80  
[info@rust-oleum.eu](mailto:info@rust-oleum.eu)

**N.V. Martin Mathys S.A.**  
Kolenbergstraat 23  
3545 Zelem  
Belgium  
T: +32 (0) 13 460 200  
F: +32 (0) 13 460 201  
[info@rust-oleum.eu](mailto:info@rust-oleum.eu)

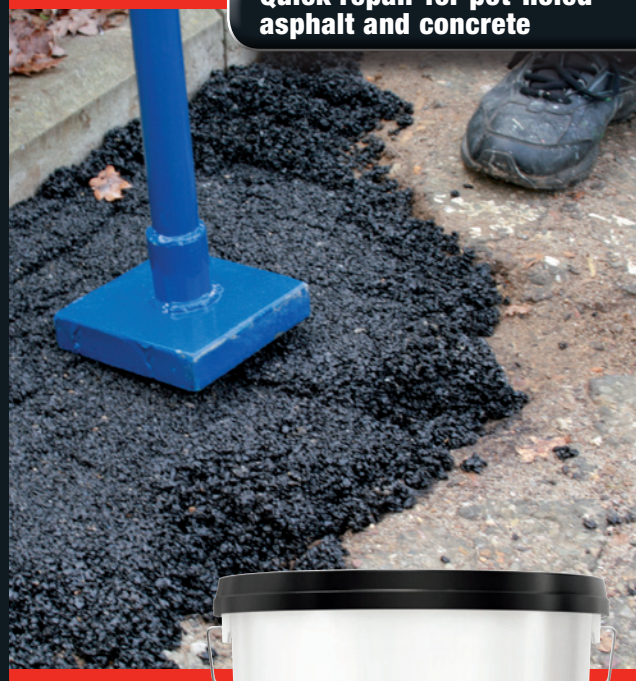
V390.GB - 06.12

[WWW.RUST-OLEUM.EU](http://WWW.RUST-OLEUM.EU)

**RUST-OLEUM®**

# ASPHALT REPAIR

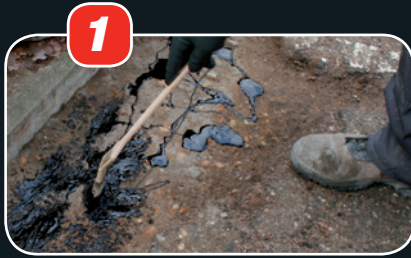
Quick repair for pot-holed  
asphalt and concrete



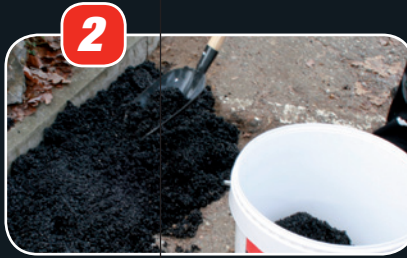
**RUST-OLEUM®** INDUSTRIAL PAINTS & COATINGS

**RUST-OLEUM®** INDUSTRIAL PAINTS & COATINGS

# RUST-OLEUM® ASPHALT REPAIR



Apply primer



Fill



Compact

## Quick repair for pot-holed asphalt and concrete

- Simple to use - no mixing required
- Repairs can be driven over immediately after application
- Ideal for repairs 10 mm – 70 mm
- Coverage approx. 0.5m<sup>2</sup> per 25kg at 24 mm thick
- Withstands heavy traffic



**Instantly!**

Rust-Oleum® **Asphalt Repair** is a durable bitumen-based patch repair product for use on exterior pot-holed asphalt and concrete. Ideal for potholes in roads, car parks, paths and other bituminous and concrete surfaces.

### Rust-Oleum® **Tamper**

A 4.5 Kg square tamper with a 1370mm steel shaft. Ensures optimum application of Rust-Oleum® Asphalt Repair.



**Black**

**Item nr: 5410.25**

Available in 25 Kg



**Item nr: V5410**