

**1-2-3 MAINTENANCE**

**THERE'S A HARD HAT® FOR EVERY PAINT JOB**

**FIND YOUR SOLUTION >**

**HARD HAT® COVERS IT ALL >**



# HARD HAT® COVERS IT ALL

Surface protection is a major challenge for any industrial maintenance team. Harsh conditions damage protective coatings, putting safety and operations at risk. HARD HAT® offers a wide range of industrial aerosols for any kind of surface. Applied quickly and easily, it guarantees high quality protection that lasts longer.

We offer quick and easy solutions for daily maintenance in and around any plant or building. We've got you covered for small touch-ups, specific surface marking or larger maintenance work. No matter what you're working on, we have a HARD HAT® aerosol that does the job. This product selector helps you choose the right aerosol to solve your challenge.

**FIND YOUR SOLUTION >**



# FIND YOUR IDEAL SOLUTION

[Outdoor maintenance >](#)

[Indoor maintenance >](#)

## SPECIFIC SUBSTRATES & PARTICULAR CONDITIONS

We provide practical guidance for specific substrates (steel, wood, plastic, etc.) as well as particular conditions (heat, cold, chemical deterioration, UV resistance, heavy wear, etc.).

[Search by substrate >](#)
[Search by condition >](#)

## HARD HAT® RANGE

Want to explore the HARD HAT® range without having a specific application in mind? Check out our solutions by application category:

[Finishing >](#)
[Galvanising >](#)
[Surface preparing >](#)
[Marking >](#)

# INDOOR MAINTENANCE

HEAT-RESISTANT FINISH >

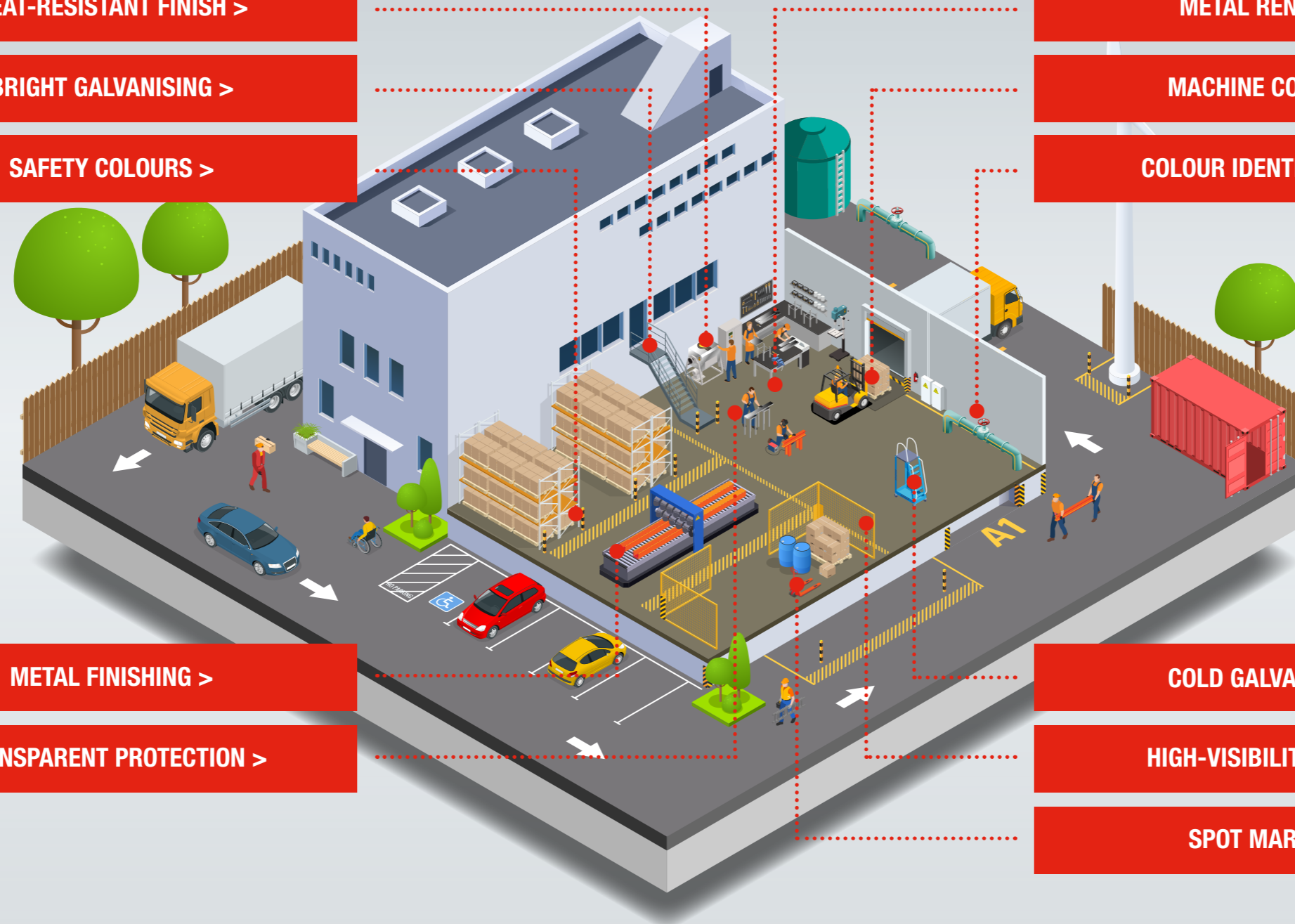
BRIGHT GALVANISING >

SAFETY COLOURS >

METAL RENEWAL >

MACHINE COLOURS >

COLOUR IDENTIFICATION >



METAL FINISHING >

TRANSPARENT PROTECTION >

COLD GALVANISING >

HIGH-VISIBILITY FINISH >

SPOT MARKING >

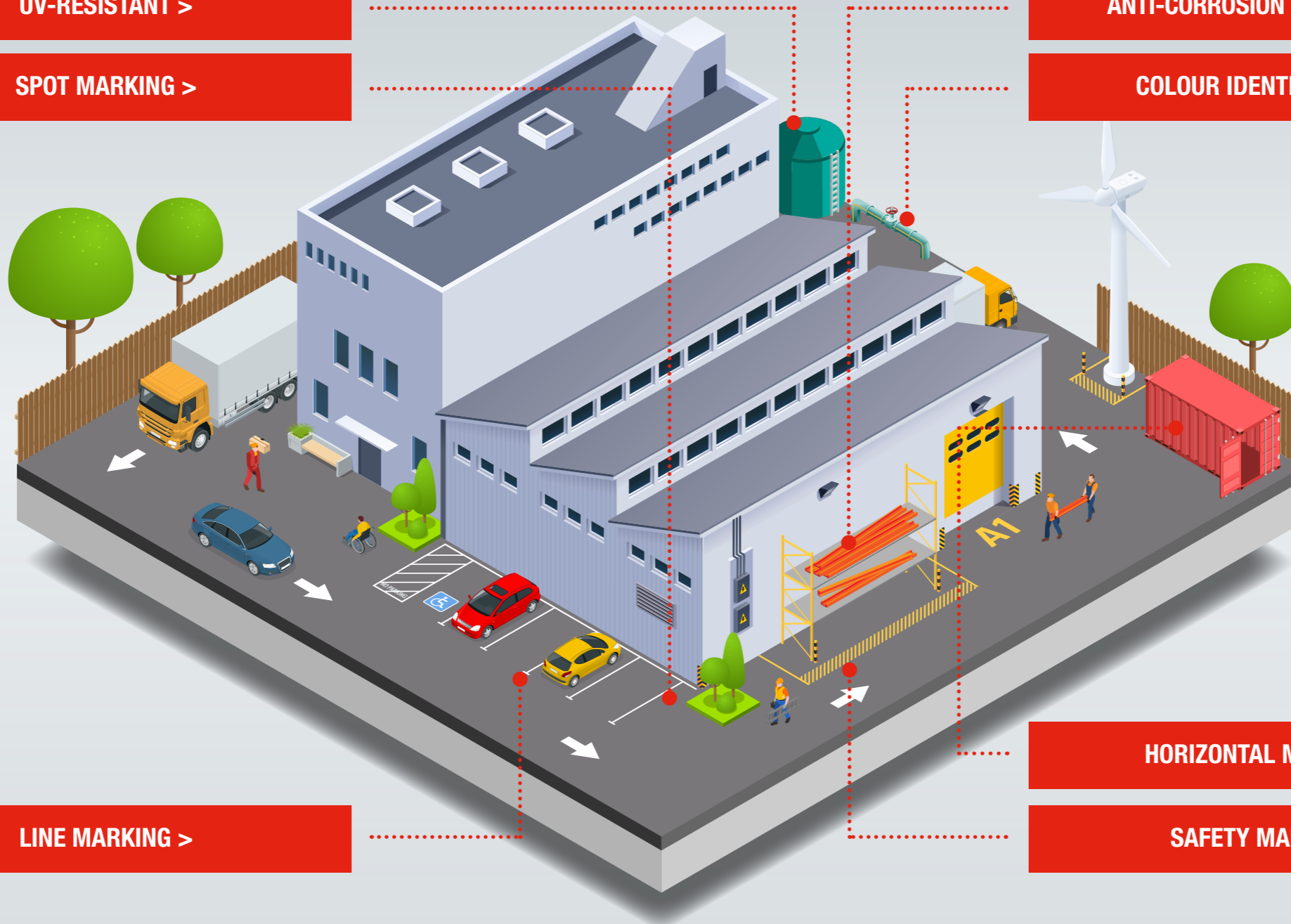
# OUTDOOR MAINTENANCE

UV-RESISTANT >

SPOT MARKING >

ANTI-CORROSION PROTECTION >

COLOUR IDENTIFICATION >



LINE MARKING >

HORIZONTAL MARKING >

SAFETY MARKING >

# PRODUCTS FOR THE MOST COMMON SUBSTRATES

## BARE STEEL

[ANTI-RUST PRIMER >](#)[GALVA ZINC >](#)[FINISHING SOLUTIONS >](#)

## RUSTED METAL

[ANTI-RUST PRIMER >](#)[TOPCOATS SOLUTIONS >](#)

## BARE WOOD

[TOPCOATS SOLUTIONS >](#)

## PLASTIC / HARD PVC

[ADHESION PRIMER >](#)[TOPCOATS SOLUTIONS >](#)

## GALVANISED STEEL

[ADHESION PRIMER >](#)[GALVA ZINC >](#)[GALVA ZINC-ALU >](#)

## PAINTED METAL (GOOD CONDITION)

[TOPCOATS SOLUTIONS >](#)[METALLIC TOPCOATS >](#)

## PAINTED WOOD (GOOD CONDITION)

[TOPCOATS SOLUTIONS >](#)

## CONCRETE

[MARKING SOLUTIONS >](#)[TOPCOATS SOLUTIONS >](#)

## ALUMINIUM

[ADHESION PRIMER >](#)[TOPCOATS SOLUTIONS >](#)

## PAINTED METAL (POOR CONDITION)

[PAINT STRIPPER >](#)[ANTI-RUST PRIMER >](#)[TOPCOATS SOLUTIONS >](#)

## PAINTED WOOD (POOR CONDITION)

[PAINT STRIPPER >](#)[TOPCOATS SOLUTIONS >](#)

**OTHER SUBSTRATE?  
OUR EXPERTS  
ARE HERE TO HELP**

[GET IN TOUCH >](#)

# PRODUCTS FOR THE MOST COMMON CONDITIONS

## HEAT RESISTANCE



HEAT RESISTANCE >

HARD HAT® ADVANCED >

## COLD CONDITIONS



GALVA EXPRESSE >

## UV RESISTANCE



TRANSPARENT TOPCOAT >

HARD HAT® ADVANCED >

## CATHODIC PROTECTION



GALVANISING SOLUTIONS >

## QUICK DRY



GALVA EXPRESSE >

FINISHING SOLUTIONS >

## ANTI-RUST



ANTI-RUST PRIMER >

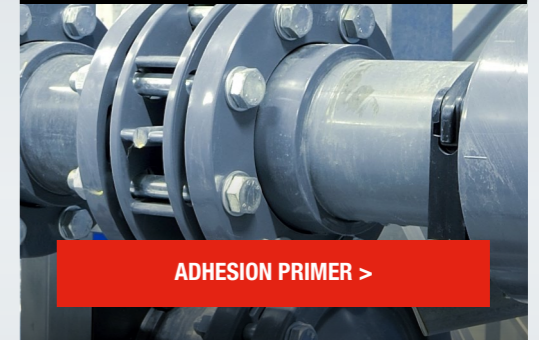
HARD HAT® ADVANCED >

## BAD ADHESION



PAINT STRIPPER >

## SMOOTH SURFACE



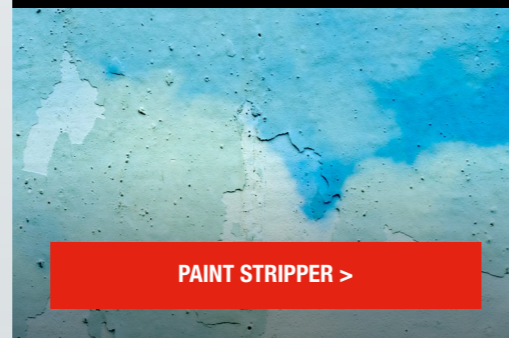
ADHESION PRIMER >

## DIRTY WALL



STAIN BLOCKER >

## OLD PAINT LAYER



PAINT STRIPPER >

**ANOTHER CHALLENGE?  
OUR EXPERTS  
ARE HERE TO HELP**

GET IN TOUCH >

# HARD HAT® TOPCOATS

## TOUCH-UPS IN SECONDS, TOPCOATS FOR YEARS

### HARD HAT® TOPCOATS

Many metal or other surfaces need incidental or periodic repairs or touch-ups, to freshen up colours, protect metal base layers, repair glossy finishes and so on. HARD HAT® Topcoats is a wide range of industrial aerosols that tackle these issues in seconds and last longer.

### BENEFITS



More paint  
per spray can



Easy  
application



Long-lasting  
quality



Great hiding  
power



Available in  
any colour



Fast drying  
and recoating



[HARD HAT® ADVANCED >](#)



[HIGH-PERFORMANCE TOPCOATS >](#)



[METALLIC TOPCOATS >](#)



[FLUORESCENT TOPCOATS >](#)



[TRANSPARENT TOPCOAT >](#)



[HEAT RESISTANT TOPCOATS >](#)

**HARD HAT® ADVANCED**

# ANTI-CORROSION TOPCOATS FOR ULTRA-PERFORMANT DURABLE PROTECTION



- ✓ Primer & topcoat in 1
- ✓ Strong corrosion protection
- ✓ High colour retention

[PRODUCT DETAILS >](#)

[ASK AN EXPERT >](#)

[FIND DISTRIBUTOR >](#)

## ALTERNATIVE



### ANTI-RUST PRIMER & HARD HAT® TOPCOAT

look into combining these two top performers when looking at a heavy duty area needing touch-ups that are a bit more challenging

**HARD HAT® ORIGINAL**

# HIGH-PERFORMANCE TOPCOATS IN MACHINE, SAFETY AND IDENTIFICATION COLOURS



- ✓ Can be handled after 30 minutes (at 20 °C)
- ✓ Is heat resistant up to 100 °C
- ✓ Comes in 45 RAL colours
- ✓ Provided in custom colours on request

[PRODUCT DETAILS >](#)
[ASK AN EXPERT >](#)
[FIND DISTRIBUTOR >](#)

## COMBINE WITH



**ANTI-RUST PRIMER**  
to optimise results on rusty surfaces



**ADHESION PRIMER**  
to obtain adhesion on smooth surfaces

## ALTERNATIVE



**HARD HAT® ADVANCED**  
Primer & topcoat in 1 for corrosive surfaces

## METALLIC TOPCOATS

# GLOSS OR SPARKLING PROTECTIVE METALLIC FINISHING



- ✓ Comes in gloss or sparkling metallic appearance
- ✓ Restores metallic look of various objects
- ✓ Applicable on bare and galvanised metal and zinc or anti-rust primer

[PRODUCT DETAILS >](#)
[ASK AN EXPERT >](#)
[FIND DISTRIBUTOR >](#)

### COMBINE WITH



**GALVA ZINC**  
as cathodic  
matt primer  
of bare and  
galvanised  
steel



**ANTI-RUST  
PRIMER**  
to optimise  
results  
on rusty  
surfaces

### ALTERNATIVE



**GALVA ZINC-ALU**  
for a sparkling  
compromise  
between a zinc  
and aluminium  
spray



**GALVA PLUS**  
to get a  
glossy new  
galvanised  
look

## FLUORESCENT TOPCOATS

# HIGHLY VISIBLE SPRAY PAINT FOR STENCILS, SAFETY MARKINGS AND COLOUR CODING



- ✓ A range of highly visible fluorescent coatings
- ✓ Ideal for railings, signs, colour coding, etc.
- ✓ Can be handled after 30 minutes (at 20 °C)
- ✓ Available in red, orange, yellow, green and blue

[PRODUCT DETAILS >](#)
[ASK AN EXPERT >](#)
[FIND DISTRIBUTOR >](#)

### COMBINE WITH



**HARD HAT® ORIGINAL**  
Matt White as undercoat for best results



**TRANSPARENT TOPCOAT**  
for glossy UV protection

### ALTERNATIVE



**MULTI-MARKING**  
sprays for horizontal spray marking on various surfaces

## TRANSPARENT TOPCOAT

# PROTECTIVE TOPCOAT FOR COPPER, CHROME, SILVER, BRONZE, NICKEL AND ALUMINIUM



- ✓ Gives gloss repair to old coatings
- ✓ Quickly dries in 10-15 minutes
- ✓ Is non-yellowing (UV resistant)
- ✓ Protects various metal surfaces
- ✓ Extends durability of metallic and fluorescent coatings

[PRODUCT DETAILS >](#)
[ASK AN EXPERT >](#)
[FIND DISTRIBUTOR >](#)

### COMBINE WITH



**METALLIC TOPCOATS**  
when protecting copper, chrome, silver, bronze, nickel and aluminium



**FLUORESCENT TOPCOATS**  
for extra visibility when spraying stencils, marking or colour coding

### ALTERNATIVE



**HARD HAT® ADVANCED**  
primer & topcoat in 1 for corrosive surfaces

## HEAT-RESISTANT TOPCOATS

# HEAT-RESISTANT PROTECTION FOR TEMPERATURES UP TO 750°C



- ✓ Perfect for engines, heat cannons, pipes, vents, etc.
- ✓ Tolerates continuous temperatures up to 650 °C
- ✓ Tolerates peak temperatures up to 750 °C
- ✓ Applicable on bare metal or slightly rusted surfaces
- ✓ Can be handled within 3 hours (at 20 °C)
- ✓ Available in satin/matt black and aluminium

[PRODUCT DETAILS >](#)
[ASK AN EXPERT >](#)
[FIND DISTRIBUTOR >](#)

# HARD HAT® GALVANISING FIGHT STEEL CORROSION WITH CATHODIC PROTECTION

## HARD HAT GALVANISING

Cathodic treatment of steel constructions and machinery is only effective when using high-quality components that give durable protection. All HARD HAT® Galvanising coatings guarantee the best performance on the market.

## BENEFITS



High zinc content



Applicable up to 0°C



Durable protection



Precise and safe



Fast drying and recoating



GALVA ZINC >



GALVA EXPRESSE >



GALVA ZINC-ALU >



GALVA PLUS >

## GALVA ZINC

# CATHODIC PRIMER OR FINISH FOR BARE AND GALVANISED STEEL



- ✓ Gives cathodic protection of bare and galvanised steel
- ✓ Contains 90% pure zinc in dry paint film
- ✓ Resists 500 hours of salt spray testing
- ✓ Recoatable within 1 hour, brush dry after 4 hours

[PRODUCT DETAILS >](#)
[ASK AN EXPERT >](#)
[FIND DISTRIBUTOR >](#)

## COMBINE WITH



**METALLIC TOPCOATS**  
for silver or sparkling finish of copper, chrome, silver, bronze, nickel and aluminium



**GALVA ZINC-ALU**  
for a sparkling or matt finish on top of the matt cathodic protection

## GALVA EXPRESSE

# QUICK-DRY ZINC PRIMER FOR COLD GALVANISING



- ✓ Ideal in production and construction environments
- ✓ Gives protection and dries quickly at the same time
- ✓ Tack-free after 5 minutes, to be handled after 10 minutes
- ✓ Resists 400 hours of salt spray testing

[PRODUCT DETAILS >](#)

[ASK AN EXPERT >](#)

[FIND DISTRIBUTOR >](#)

## ALTERNATIVE



**GALVA ZINC**  
gives cathodic  
protection of bare  
and galvanised steel

## GALVA ZINC-ALU

# SPARKLING ZINC FINISHING FOR BARE AND GALVANISED STEEL



- ✓ The best compromise between a zinc spray and an aluminium spray
- ✓ Has sparkling aluminium particles
- ✓ Resists 340 hours of salt spray testing

[PRODUCT DETAILS >](#)

[ASK AN EXPERT >](#)

[FIND DISTRIBUTOR >](#)

## ALTERNATIVE



**METALLIC TOPCOATS**  
for silver or sparkling protection of copper, chrome, silver, bronze, nickel and aluminium



**GALVA PLUS**  
to get a glossy new galvanised look

## GALVA PLUS

# QUICK-DRY TOUCH-UP FINISHING FOR GALVANISED STEEL



- ✓ Looks like newly galvanised surface
- ✓ To touch up new galvanised surfaces
- ✓ Resists 310 hours of salt spray testing
- ✓ Has lower zinc and higher aluminium content

[PRODUCT DETAILS >](#)

[ASK AN EXPERT >](#)

[FIND DISTRIBUTOR >](#)

## ALTERNATIVE



**GALVA ZINC-ALU**  
for a sparkling  
compromise between  
a zinc and aluminium  
spray

# HARD HAT® SURFACE PREPARATION

## EASY PRE-TREATMENT THAT PAYS OFF

### HARD HAT® SURFACE PREPARATION

When surfaces are stained, slightly rusting, lack adhesion or need stripping, they require proper preparation before you apply a new layer. HARD HAT® Surface Preparation aerosols offer a solution for many issues on multiple substrates, saving you time, money and stress.

### BENEFITS



Treat multiple surfaces



100% effectiveness



Ensure quality finishing



Fast drying and recoating



ANTI-RUST PRIMER >



ADHESION PRIMER >



STAIN BLOCKER >



PAINT STRIPPER >

## ANTI-RUST PRIMER

# THE QUICK ANTI-RUST PRIMER FOR RUSTY SURFACES



- ✓ Applicable on new or slightly rusty surfaces
- ✓ Recoatable within 1 hour or after 48 hours
- ✓ To be handled after 30 minutes
- ✓ Penetrates deep in the surface giving rust no chance

[PRODUCT DETAILS >](#)
[ASK AN EXPERT >](#)
[FIND DISTRIBUTOR >](#)

### COMBINE WITH



**HARD HAT® ORIGINAL**  
 offering multiple colours,  
 metal protection sprays,  
 transparent and fluorescent  
 solutions

### ALTERNATIVE



**HARD HAT® ADVANCED**  
 primer & topcoat in 1  
 for corrosive surfaces

## ADHESION PRIMER

# ADHESION PRIMER FOR SMOOTH SURFACES AND GALVANISED STEEL



- ✓ Recoatable within 30 minutes
- ✓ Gives unique 5.5 m<sup>2</sup> coverage per aerosol
- ✓ Provides wide-angle spray pattern for large-scale and even coverage

[PRODUCT DETAILS >](#)[ASK AN EXPERT >](#)[FIND DISTRIBUTOR >](#)

## COMBINE WITH



**HARD HAT® ORIGINAL**  
offering multiple colours,  
metal protection sprays  
and fluorescent solutions

# PAINT STRIPPER PAINT OR GLUE STRIPPER



- ✓ More effective than other green paint strippers
- ✓ Gel-like paste works better than liquid alternatives
- ✓ Applicable as low as 0 °C
- ✓ Also works as a glue remover
- ✓ Gives results quickly
- ✓ Contains no methylene chloride

[PRODUCT DETAILS >](#)

[ASK AN EXPERT >](#)

[FIND DISTRIBUTOR >](#)

## COMBINE WITH



**ANTI-RUST PRIMER**  
for a quick priming of  
rusty stripped surfaces

**STAIN BLOCKER**

# INSTANT SPOT COVERING FOR VARIOUS SUBSTRATES



- ✓ Applicable on concrete, plaster, particle board, existing coatings, wall paper....
- ✓ Recoatable with standard wall paints
- ✓ Gives a high opacity matt white finish
- ✓ Is UV-resistant (non-yellowing)

[PRODUCT DETAILS >](#)[ASK AN EXPERT >](#)[FIND DISTRIBUTOR >](#)

## HARD HAT® MARKING

# MARK ANY SURFACE, IN ANY COLOUR

### HARD HAT® MARKING

Need to mark a specific spot, demarcate traffic areas or apply symbols or messages on rough surfaces? HARD HAT® Marking aerosols are a selection of writing, spraying and line marking paints in eye-catching shades. Perfect for last-minute signage or safety warnings on site.

### BENEFITS



Multi-surface solutions



Easy application



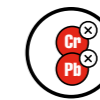
Short drying times



Functional colour palette



For any kind of marking



Lead & chromate-free



LINE MARKING >



SPOT MARKING >



MULTI-MARKING >



GROUND MARKING >

## LINE MARKING

# DURABLE LINE MARKING AEROSOLS



- ✓ Marks lines in 5-10 cm width
- ✓ Allows for light traffic after just 4 hours
- ✓ Adheres to asphalt, concrete, grass, metal, wood, etc.

[PRODUCT DETAILS >](#)
[ASK AN EXPERT >](#)
[FIND DISTRIBUTOR >](#)

## USE WITH



**Rust-Oleum®**  
line applicators for  
easy ergonomic  
application

## SPOT MARKING

# MARKING SPRAYS FOR ANY SUBSTRATE



- ✓ To mark difficult substrates
- ✓ Gives best opacity, is weather-resistant and watertight
- ✓ Applicable on metal, concrete, asphalt, gravel, soil, grass, wood, etc.
- ✓ Suitable even on slightly wet surfaces
- ✓ Comes with practical upside down spraying system

[PRODUCT DETAILS >](#)
[ASK AN EXPERT >](#)
[FIND DISTRIBUTOR >](#)

## ALTERNATIVE



**FLUORESCENT TOPCOATS**  
 for extra visibility when  
 spray painting stencils,  
 safety markings and colour  
 coding

## MULTI-MARKING

# MARKING SPRAYS OPTIMISED FOR HORIZONTAL MARKING



- ✓ Optimised for horizontal marking
- ✓ Small line width for easier writing
- ✓ Spray through cap for ease of use
- ✓ For use on wood, concrete, metal, etc.

[PRODUCT DETAILS >](#)
[ASK AN EXPERT >](#)
[FIND DISTRIBUTOR >](#)

## ALTERNATIVE



**FLUORESCENT TOPCOATS**  
 for extra visibility when  
 spray painting stencils,  
 safety markings and colour  
 coding

## GROUND MARKING

# GROUND MARKING SPRAYS IN FLUORESCENT AND RAL TRAFFIC COLOURS



- ✓ Optimised for ground marking
- ✓ Has spray-through cap for ease of use
- ✓ Allows for easier writing
- ✓ Dries quickly in 5-10 minutes

[PRODUCT DETAILS >](#)
[ASK AN EXPERT >](#)
[FIND DISTRIBUTOR >](#)

## ALTERNATIVE



**FLUORESCENT TOPCOATS**  
 for extra visibility when  
 spray painting stencils,  
 safety markings and colour  
 coding

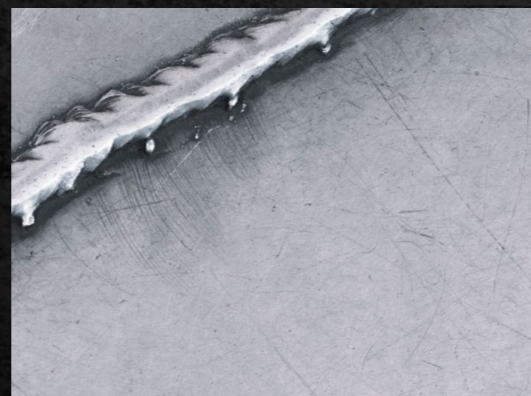
**HARD HAT®**

# THE NO. 1 INDUSTRIAL PAINT AEROSOL



## TOPCOATS

Touch-ups in seconds,  
topcoats for years



## GALVANISING

Fight steel corrosion with  
cathodic protection



## SURFACE PREPARATION

Easy pre-treatment  
that pays off



## MARKING

Mark any surface,  
in any colour